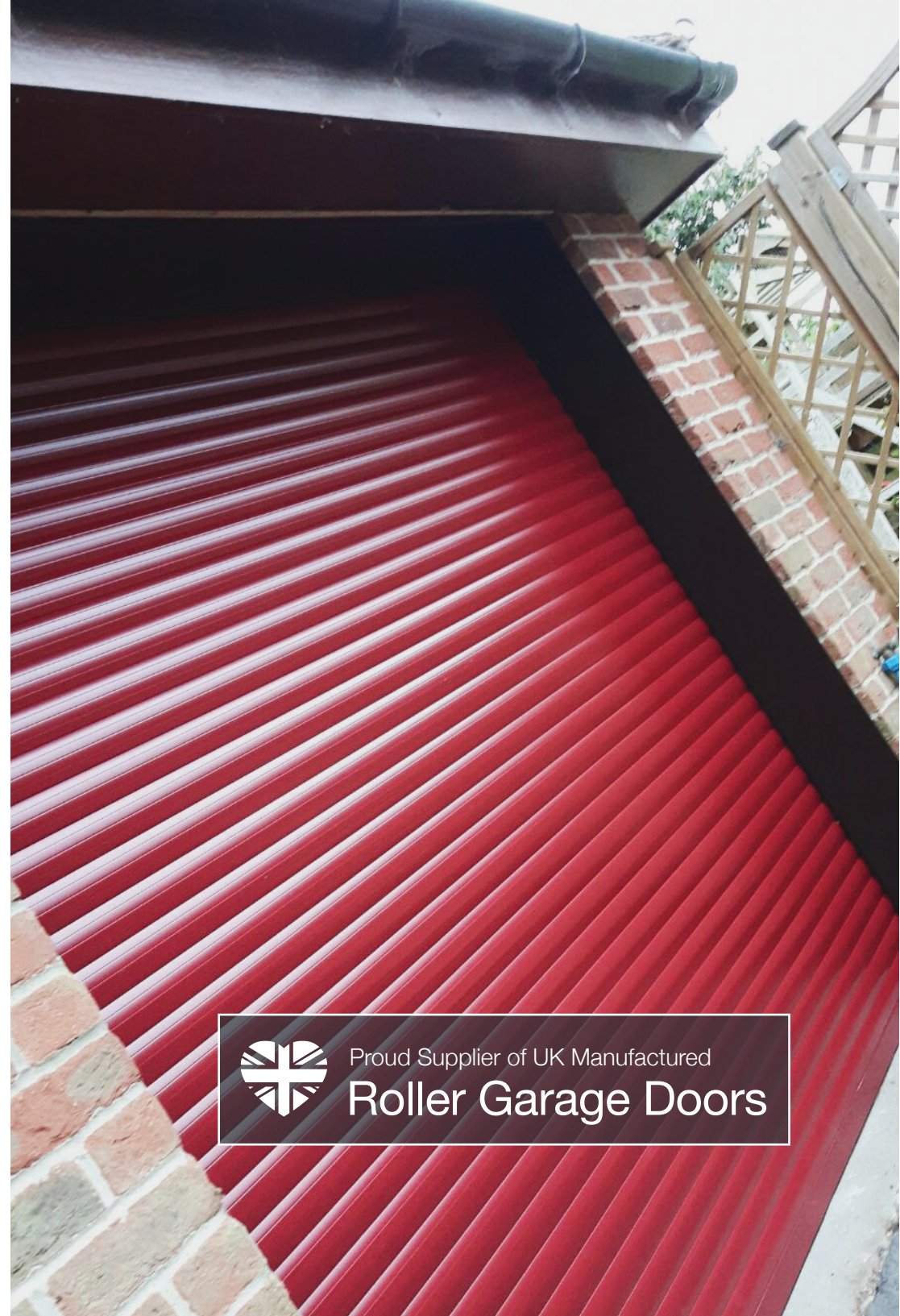


Roller Garage Doors For Your Home



Proud Supplier of UK Manufactured
Roller Garage Doors



Standard 77

Our Standard 77 roller garage doors are perfect for larger garages, but can be just as easily installed on more compact garages to provide functionality and efficiency while keeping the costs affordable.

This range of doors have a maximum opening width of 16ft, and are well suited for single, large or double-sized garages. All our remote controlled Standard 77 roller doors come with two remotes as standard with two occupants in mind, meaning that neither user has to go without the added convenience and ease of use that remote access offers.

With our careful design, the large size of our Standard 77 roller doors does not impede the functionality of the doors, or increase the amount of space this model takes up within your garage; we create strong, durable and efficient doors with the roll housing and guide runners designed to be as compact as possible to take up minimal storage space within your garage.

Our Standard 77 roller garage doors come with a minimum two year warranty and are available in a range of colours and with a number of optional extra features and safety functions to ensure ease of use and an attractive aesthetic.

Standard 77 Product Range

Specification

General

Top Box:	300mm (12 inch) Sq
Guide Runner Width:	95mm (4 inches)
Slat Height:	77mm (3 inch)
Slat Depth:	18mm (3/4 inch)

Standard 77-RC Single

Max. curtain surface area:	15 square meters
Max. opening width up to:	2745mm (9ft)
Max. opening height up to:	2300mm (7ft 6")

Standard 77-RC Large

Max. curtain surface area:	15 square meters
Max. opening width up to:	3660mm (12ft)
Max. opening height up to:	2300mm (7ft 6")

Standard 77-RC Double

Max. curtain surface area:	15 square meters
Max. opening width up to:	4880mm (16ft)
Max. opening height up to:	2300mm (7ft 6")



Description

The Standard 77 remote control roller garage door is available in a choice of 13 painted curtain colours & 2 laminate wood effects, it comes with an internal manual override & 2 handsets as standard, as well as a fully enclosed 300mm square top box it has 95mm wide guide runners which allows it to cover clear openings of up to 16ft (4880mm) wide.



Compact 55

Our Compact 55 roller garage doors are ideally suited to single sized openings garages. This garage door is slimline, with the box and guide runner taking up very little space within the garage. The maximum total width of an Compact 55 door is up to 8ft, including the frame, so really is built with scale in mind. This space saving model can be measured and fitted by our own team of experts.

We believe that the size of your garage shouldn't influence the quality of your garage door, so our Compact 55 roller doors are constructed to consistently high standards and offer smooth, easy operation and a strong, robust door that is guaranteed to last for years to come; our Compact 55 roller garage door comes with a minimum of a two year warranty as standard.

Our range of Compact 55 roller doors come with two remote control handsets as standard, with additional handsets available if needed. We use robust and durable aluminium to manufacture our doors, which are available in a range of colours.

Compact 55 Product Range

Specification

General

Top Box:	205mm (8 inch) Square
Guide Runner Width:	65mm (2 1/2 inches)
Slat Height:	55mm (2 inch)
Slat Depth:	8mm (1/4 inch)

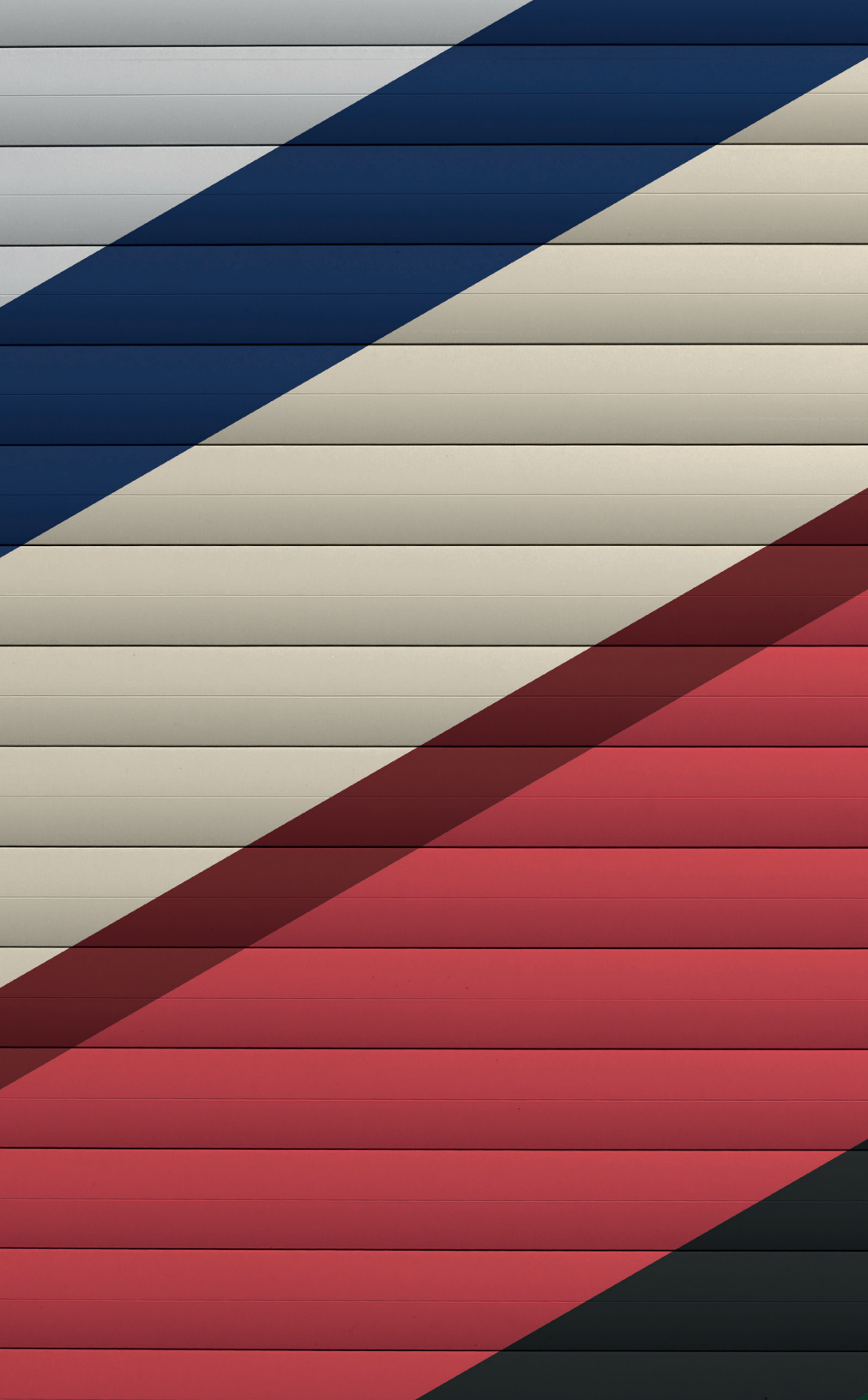
Compact 55-RC Compact

Max. curtain surface area:	7 square meters
Max. opening width up to:	2310mm (7ft 7")
Max. opening height up to:	2300mm (7ft 6")



Description

The Compact 55 remote control roller garage door is available in a choice of 12 painted curtain colours, it comes with an internal manual override & 2 handsets as standard, as well as a fully enclosed 205mm square top box it has 65mm wide guide runners making it ideal for garages with limited room or on a budget.



Colour Options

We know that alongside quality control, style and aesthetic appeal is a very important feature for any roller garage door. Your garage door makes up a huge portion of the front of your house, meaning that it is normally the first thing that passers-by will notice about the appearance of your property.

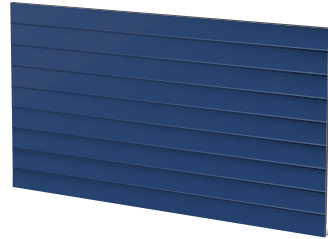
With colour playing such a huge part in the kerb appeal of your home, we're committed to providing many beautiful colours and designs for our doors, including 13 beautiful shades and two laminate designs.

Although we try to get as accurate a match as possible please be aware that colours in print aren't necessarily exactly as the finished product.

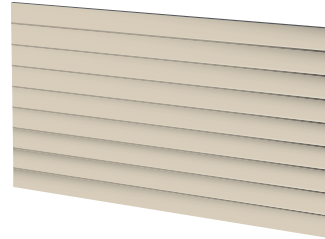
White



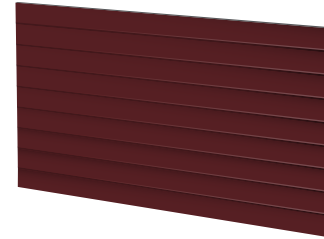
Blue



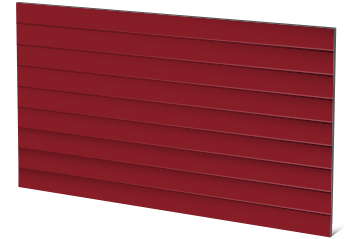
Beige



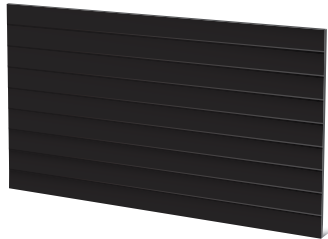
Brown



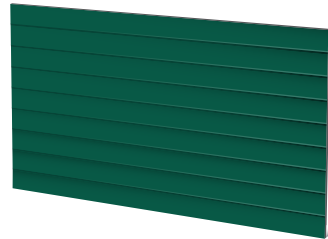
Red



Black



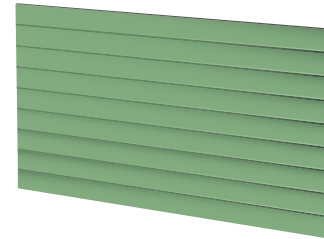
Green



Anthracite



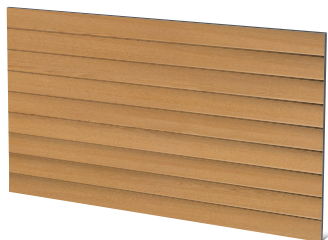
Chartwell Green*



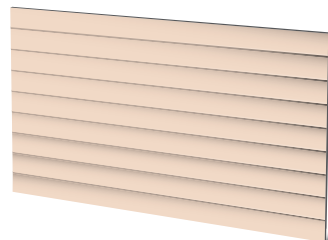
Rosewood



Golden Oak



Ivory



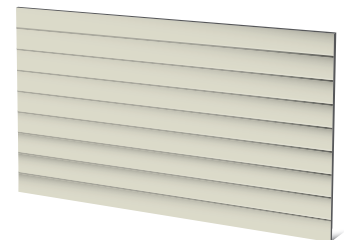
Rosewood Laminate*



Golden Oak Laminate*



Cream



★ Rosewood Laminate
Only available for Standard 77 models.
Comes in a laminate finish.

Golden Oak Laminate
Only available for Standard 77 models.
Comes in a laminate finish.

Chartwell Green
Only available for Standard 77 models.

Slats

We want our products to reflect our quality craftsmanship, so all of our slats are constructed out of strong, robust aluminium for longevity and durability, and are double skinned with a thick foam filled insert.

Compact 55 Slats

The slats for our Compact 55 range of doors are 55mm high and 8.2mm thick with a foam filled insert. The slats are made from powder coated aluminium available in a choice of 12 colours.

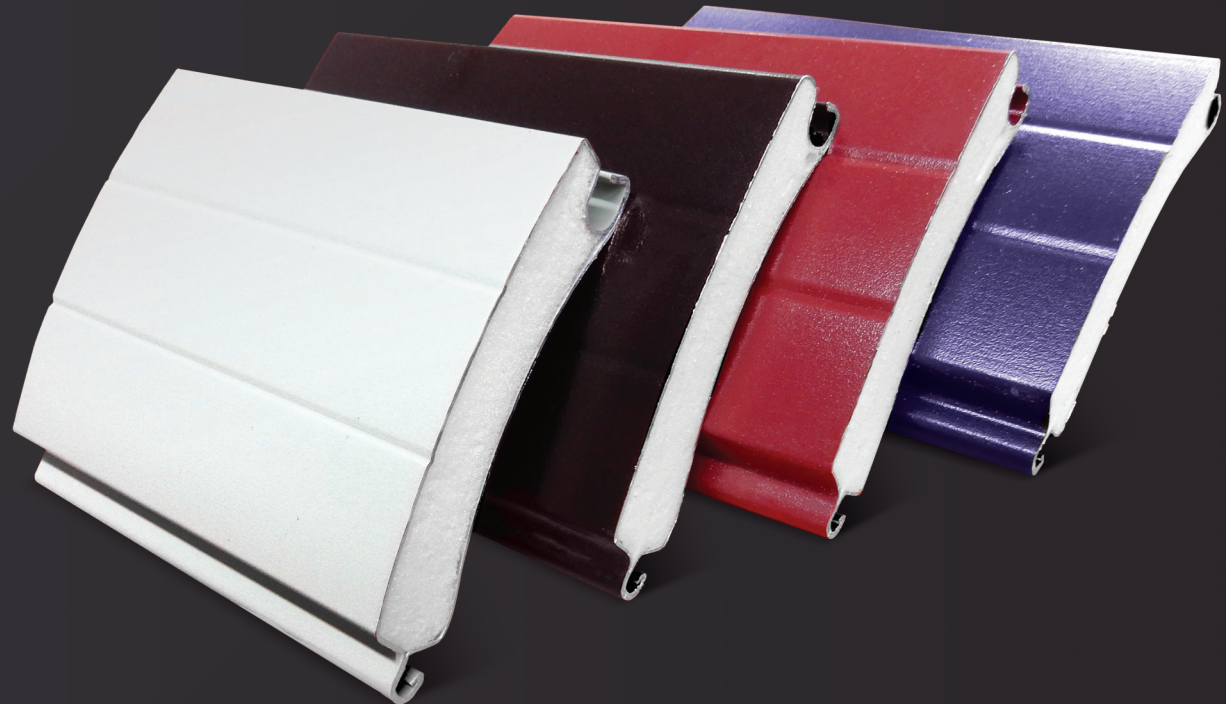
Standard 77 Slats

Our range of Standard 77 slats are 77mm high and 18mm thick with a foam filled insert. Our slats are constructed out of high quality, powder coated aluminium and are available in any of the 15 colours in our range, with 13 painted options and 2 laminate options to give your customers a wide range of aesthetic options.

Our slats are accurately assembled by our own on-site team to your customers' individual specifications, ensuring a perfect fit for every door frame, a strong seal and a long-lasting door.

Our double skinned aluminium slats offer many benefits to your customers than a single metal sheet variety, including:

- Increased insulation
- Strong physical barrier
- Reduced likelihood of break-ins
- Increased protection from ultraviolet and infrared rays
- Reduced sound pollution
- Protection against volatile weather
- Space saving within the garage
- Quieter functioning



Roll Housing

All of our roller doors are fully enclosed in a roll housing that is designed to be fitted either above or below the lintel of your garage, depending on your preference. We supply a fully enclosed roll housing because it is part of the machinery directive to stop entrapment, and ensures the longer lasting life of the internal mechanism. The enclosed roll housing is constructed out of strong and durable aluminium and can help protect your garage door from any accidental damage that can affect the functionality of your door.

Our roll housing and guide runners come as standard in white or brown, but we do offer a colour match facility where possible as an optional extra.

Benefits Of A Roll Housing:

- Provides a fascia for the door
- Provides the curtain with weather protection all round
- Protects the components of the door from dust or debris that can jam mechanisms
- Creates a very neat appearance
- Reduces operating noise
- Increases the insulation and draught-proofing qualities of the door
- Reduces the risk of fingers, ties, hair etc. being caught up in the mechanisms

Easy To Use Control Boxes

Standard Range

We stock a high quality remote control system for use with all of our ranges of roller doors, as standard our doors come with hold to run closing operation, running 230V tube motors and supplied with two transmitter handsets.

Wireless Safety Edge Range

This control panel is available to add to your door and has two transmitter handsets with a wireless safety edge. The control panel is fitted with close, open and stop buttons for operation within the garage and a courtesy light that activates when the door is in operation. This control box is compatible with all of our optional extras, including our wireless push buttons, key switches or keypads.



Guide Runners

We stock robust and durable aluminium and powder coated guide runners and brackets, constructed to the highest quality by our own expert team of manufacturers using the finest materials. Our guide runners are specially designed to protect the roller door system from debris that can get caught in the runner tracks and cause malfunctions.

Our guide runners will ensure a long lasting, quality product to ensure complete customer satisfaction for all your clientele.

Compact 55 Guide Runner

The guide runner for Compact 55 roller garage doors is constructed from powder coated aluminium and has a double brush feature. This guide runner has the measurements of 65mm width and 27mm depth.

Standard 77 Guide Runner

The guide runner for Standard 77 roller garage doors is powder coated extruded aluminium with a double brush design, available in the standard size of 95mm width and 34mm depth, or a slimline version is available on request for single roller garage doors with a width of 70mm and a depth of 34mm.



Our base rails are made from extruded aluminium to increase the strength of the curtain of the door, ensuring the longevity of our roller garage doors.

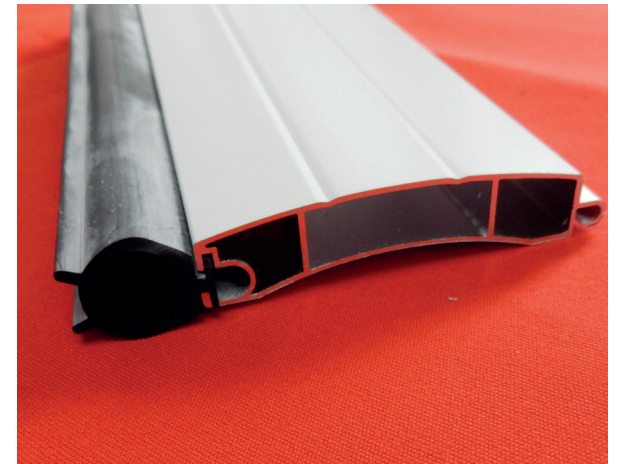
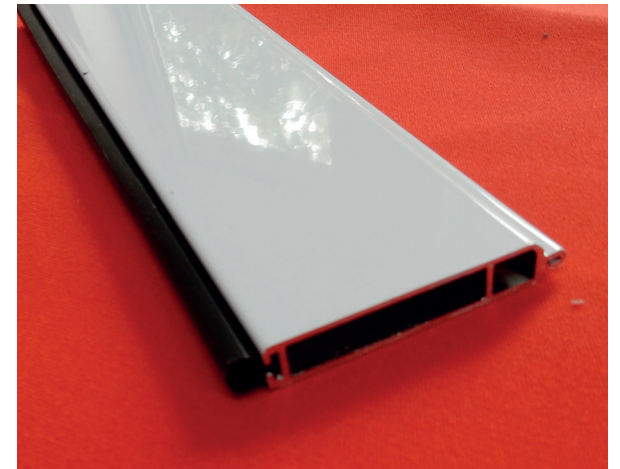
All of our base rails come as standard with a rubber strip in the bottom edge to help with insulation and noise reduction, while also working as a deterrent to pests and to provide protection against water ingress; our rubber seals help to keep your customers' garages protected all year round.

Compact 55 Base Rail

The last slat of the Compact 55 base rail is an extruded aluminium slat, powder coated to match the curtain colour. The slat is hollow, 49mm high and 8.2mm thick; there is a small rubber insert at the bottom to cushion the door, with the rubber seal being 6mm wide and 6mm high.

Standard 77 Base Rail

The Standard 77 roller garage door has a base rail of powder coated extruded aluminium, made to match the colour of the door's curtain. The slat is hollow, 78mm high and 18mm thick with a rubber seal 15mm in width and 15mm high.



Optional Extras

We have a range of optional extras that you can use with our roller doors to make your garage door even more practical and easy to operate. All of our additional components can be added to your order by our production team on-site to ensure they meet up with our exacting standards, or if you purchase your extras after your door, we'll be happy to come to your home and help you fit the new components, offering you a full demonstration on their functionality while we're there.

External Manual Override

Our external manual override system can be installed into any garage to allow the door to be operated from both inside and outside of the garage. This is a very important feature for any person who doesn't have an additional entrance to their garage to allow entry, preventing you from becoming locked out of your garage, whether due to misplaced keys or in the event of a power failure, preventing the need for a costly emergency call-out.



Hardwired Extras

We have a range of hardwired extras that are compatible with any of our roller doors and can be installed on the inside of a garage to allow you to operate the door without the use of a handset. We have two switches in stock; a rocker switch and a key switch.

Rocker Switch

- Door can be operated without a key
- Good for people with impaired grip/arthritis
- Can be used by anyone within the garage
- Simple open/close operation

Key Switch

- Limits access to key-holders only
- Reduces the chance of the door being activated accidentally
- Offers extra access without the need for additional key handsets

Wireless Features

We stock compatible wireless key switch, push button and keypad options for our range of garage doors that are fitted with a wireless edge. Wireless features are quicker to install than wired components, making these a perfect option for those of you wanting to get your new features up and running as quickly as possible. Also, as wireless components don't need wiring into the walls, installation is less obtrusive and doesn't cause any damage to the walls of your garage, allowing for a cleaner looking aesthetic.

Wireless Key Switch

Our wireless key switches hold all the benefits of a hardwired keyswitch, but as they don't need to be wired into a specific location, the switch can be placed at a convenient location for the homeowner.

Wireless Push Button

The push button can be wall mounted to allow the door to be operated from the back of the garage without the use of a keyhandset.

Wireless Keypad

Wireless keypads can be attached to the exterior of the garage door to allow access for anyone who knows the code. This grants access to multiple users without the need for lots of keys to be cut, ensuring that the security of the garage is upheld.

Notes



www.cristalwindows.co.uk

**Cristal Windows
Fleet
Hampshire
GU51 3HD**

Tel 01252 810 777

